

# UFE™ SUITE (Ultra Front-End™ Suite)

Combining extensive experience with digitalisation to increase the value in a clients' development.



## How can we help

UFE™ is Genesis' digital platform which has transformed how we deliver front end Advisory studies. It helps our clients to:

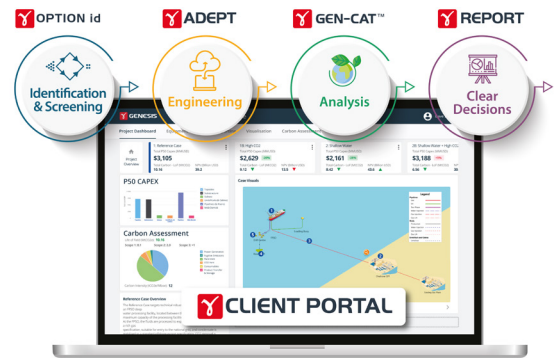
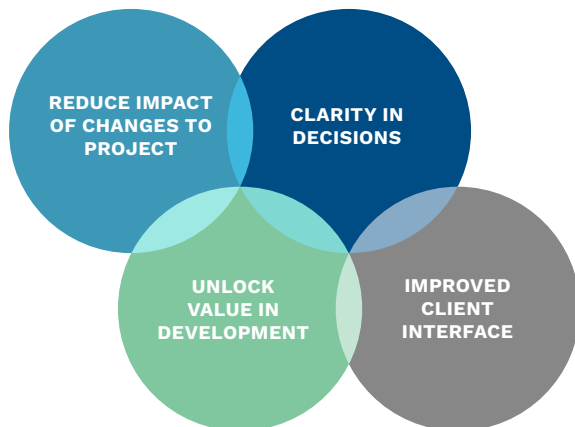
- Work more collaboratively,
- Present and share key information,
- Watch their development projects evolve.

Investment decisions are rarely straightforward for our clients. Clarity of information is key to good decision making. Clients need to trust the robustness of outcomes, and gain assurance from benchmarks. They need to understand and mitigate risks and access technology enablers.

UFE™ Suite will facilitate the initial field development conceptual phases; generating, developing and comparing options from the first inception of a project to ensure maximum value is realised.

## How we add value

- A collaborative online environment to facilitate workshops and with instant access to decision details, history and reports
- Insights and data are made available for immediate analysis or comparison as the study matures
- Tell the story easily through data visualisation at any stage of the study
- Customisable view to show the most relevant information to colleagues and partners



## What sets us apart

UFE™ Suite evaluates a wider set of development options, strategies and technologies, in more depth. It has already demonstrated an increased pace, robustness and analytical capability.

Hosted in our secure cloud-based platform, it provides a live environment in which our clients and engineers can collaborate, permitting an integrated approach and increased understanding. Key information is shown concisely and clearly in the project dashboard, from where more detailed information is available at your fingertips.

UFE™ Suite will provide a single source of truth that provides transparency and a seamless link into the next phases of the project.

<p><b>CASE STUDY</b> CO2 Reduction <a href="#">VIEW</a></p>	<p><b>SERVICES</b> Environmental and Sustainability Services <a href="#">VIEW</a></p>	<p><b>SERVICES</b> Digital and Agile Services <a href="#">VIEW</a></p>
---	---	--